



## TurboPUMP

### The better alternative to the peristaltic pump

- ▲ Precise metering by the powerful diaphragm metering principle
- ▲ Low maintenance and abrasion
- ▲ Available in 2 different materials
- ▲ Economical, simple and reliable
- ▲ Constant metering without hose exchange



# TurboPUMP

The TurboPUMP is an electric motor-driven, very low wear diaphragm metering pump, suitable for use of unpolluted, non-abrasive metering media, which are metered in a free outflow.

The drive is provided by an asynchronous motor that has an integrated fan for better cooling. The in-built spring loading ensures a low noise level and increases the lifetime.

## Technical Data

General data\*:

Designation:	Value:
Metering capacity	20 l/h, 50 l/h
Metering back pressure	max. 2 bar (0.2 MPa)
Suction height	2 m (Ws)
Rotational speed	125 min <sup>-1</sup>
Ambient temperature	max. permissible 10 - 40°C
Working time	25 % ED
Connections	Ø 10 / 16 mm
Electrical supply request	230 V / 50 Hz / others on request
Current drawn	2 A

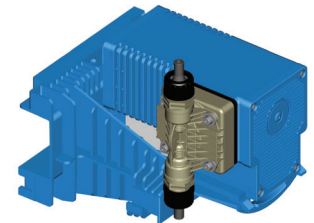
\*All the values shown refer to water as the metering medium by 20°C



TurboPUMP

### Materials:

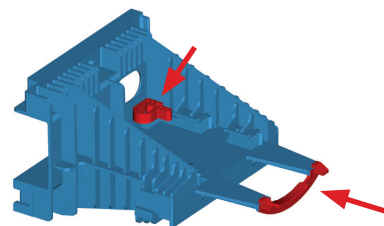
	Material No.	Material No.
Metering capacity 20 l/h	107020	107030
Metering capacity 50 l/h	1070	107010
Housing	Thermoplastic polyester	
Pump head	PP	PVDF
Membrane	PTFE-EPDM compound diaphragm	
Valve body	PP	PVDF
Valve balls	ceramics	
Valve springs	Hastelloy C4	
Gaskets	EPDM	FPM 602 (Viton B)
Color	Blue RAL 5007	



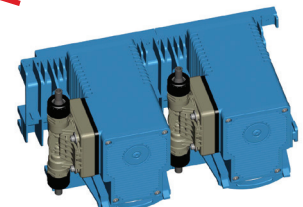
Pump with bracket

## Your benefits:

- ▲ Simple assembly by "Click & Fix" (snapping the metering pump in the bracket)
- ▲ Including cable channels on the rear side of the brackets
- ▲ Simple batch assembly of several TurboPUMPs
- ▲ Economical and cost-effective



Pump bracket



Several pumps with bracket